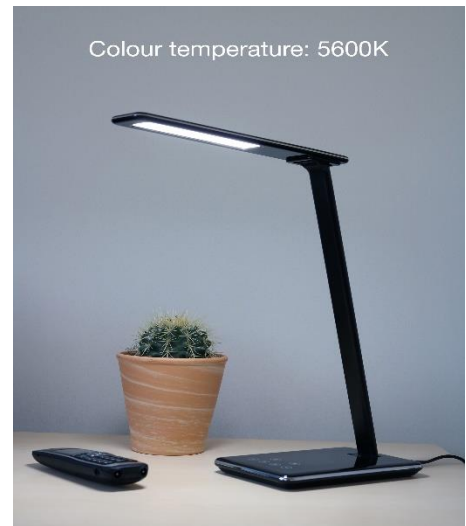




UNILUX

LINKA



LINKA is a small lamp with a sleek design with multiple functionalities. Touch switch on the base: 4 levels of light intensity and 3 levels of color temperature. It is equipped with a USB port and a Qi charger.



- **The + product:** Ideal to store it in a drawer or a bag to accompany you on your travels (office, meeting room, traveling).
- **Wireless induction charging socket (5 W):** Charge your smartphone or other compatible* device by simply placing it on the lamp base.
- **USB charging port:** integrated USB 2.0 Type A connection 5 V, max. 1A, charge your smartphone or tablet (cable not supplied).
- **Variation of light intensity and color temperature:** on the base, two touch switches allow to vary the light intensity continuously and another to adjust the color temperature to 4 levels. Adapt your lighting according to your activity (rest, reading, work).
- **Environment :** automatic interruption after 1 hour or 2 hours.
- **Modern and sober design:** LINKA is distinguished by a design with fine and clean lines. Its head does not exceed 1 cm in thickness which gives it an elegant character.
- **Optimal and even distribution of light thanks to its LEDs with natural lighting:** it will better protect your vision, reduce the tension and fatigue of your eyes.

Warranty: 2 years

Max height: 37 cm/ minimum height: 22 cm

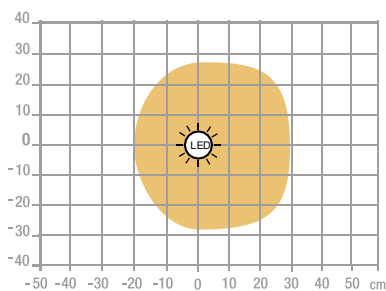
Materials: ABS plastic head and base/ aluminum arm



Professional replaceable light source (LED only)

Characteristics

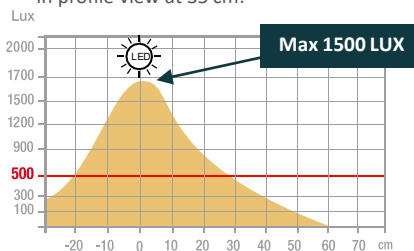
Measurement in Lux on the worktop view at 35 cm:



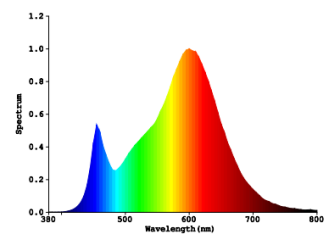
> 500 Lux

< 500 Lux

Measurement in Lux on the worktop in profile view at 35 cm:



Measurement in nanometers of the light spectrum



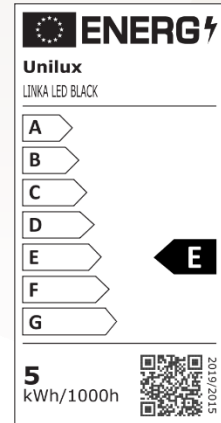
- 0 No-risk
- 1 Low-risk
- 2 Moderate-risk
- 3 High-risk

SAP no.	400124484
EAN code	3595560029402
Color	Black
Luminous flow	515
Lux at 35cm	150 cm
Lm/W	103
Color T* (K)	3000 / 3800 / 5000 / 6900
CRI	84
Source lifetime (h)	50 000
Energy consumption (kWh/1000 h)	5
USB Port	Yes
Inductive charger	Yes
Net weight (kg)	0,52

OUR CSR COMMITMENTS

1. All our lighting are **100% repairable** thus limiting planned obsolescence.
2. Reduce our carbon footprint through our **ECO-DESIGN THINKING** approach.
3. Contribute to the preservation of the planet's natural resources by promoting the use of **recycled materials**.
4. Optimize our packaging to control our **transport costs**.
5. Highlight the **talent of our employees** by ensuring social equality.

Energy class



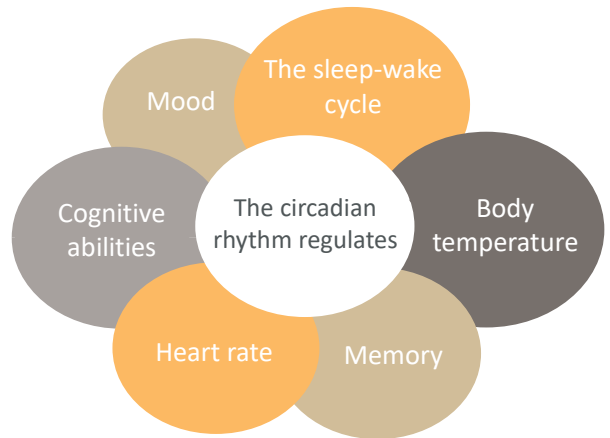
OUR EXPERTISE

1-Why use accent lighting?

We are regularly subjected to constant artificial lighting in the office that does not take into account our biological rhythm. Poor lighting quality can cause headaches, sleep disorders, loss of concentration. According to a recent study, only 34% of offices reach the lighting level of 500 lux recommended by Occupational Medicine.

2-Biodynamic light: source of well-being!

An adapted biodynamic light that accompanies you on a daily basis is essential to be effective in your work, your projects in order to prevent any harmful consequences produced by poor lighting. Your productivity will be greatly improved, you will be more dynamic and in a better mood. This is the reason why each individual must carefully follow his "circadian rhythm". The circadian rhythm is a biological rhythm that governs a set of physiological processes in humans. It is regulated by light for 24 hours.

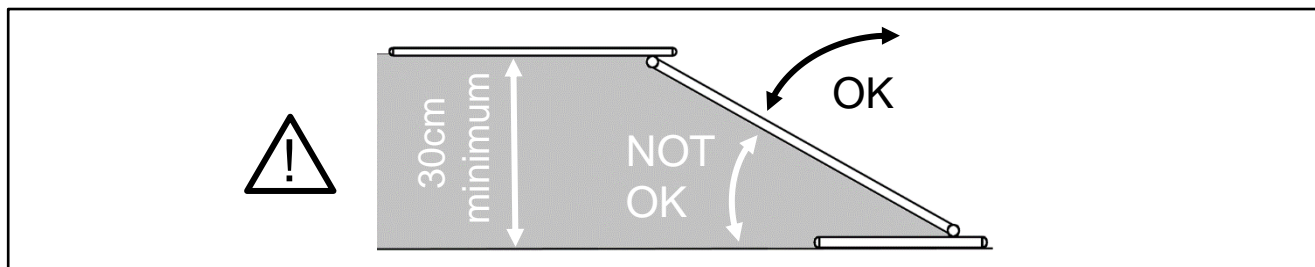
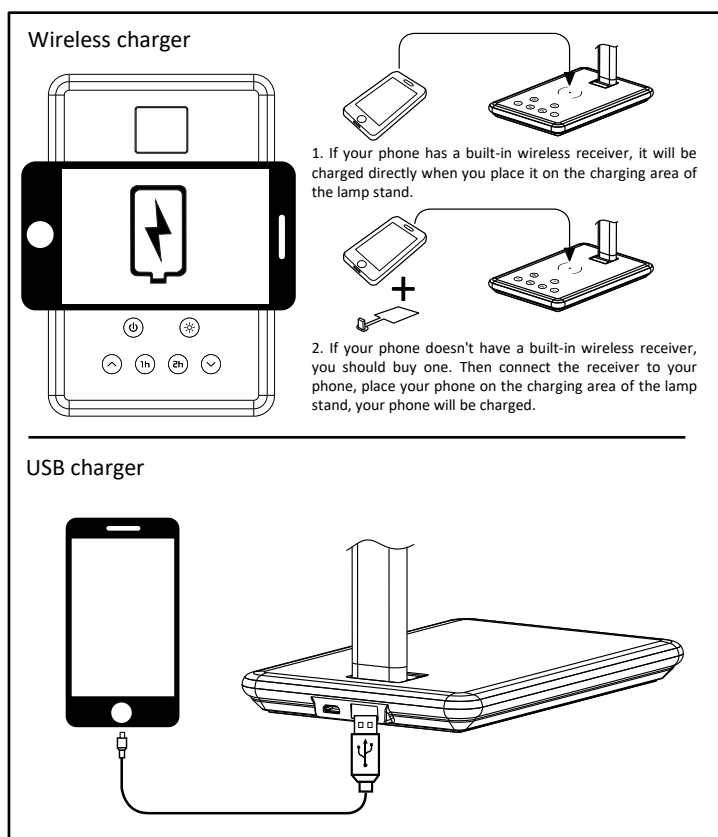
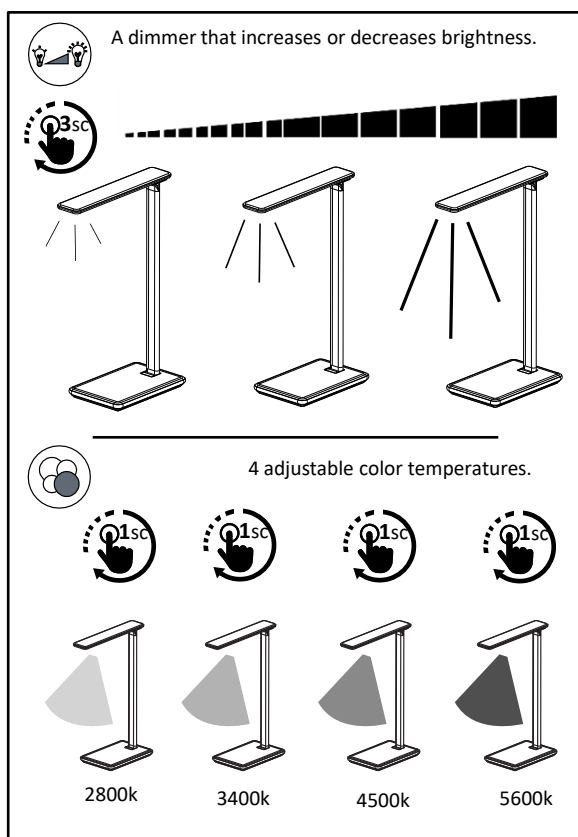
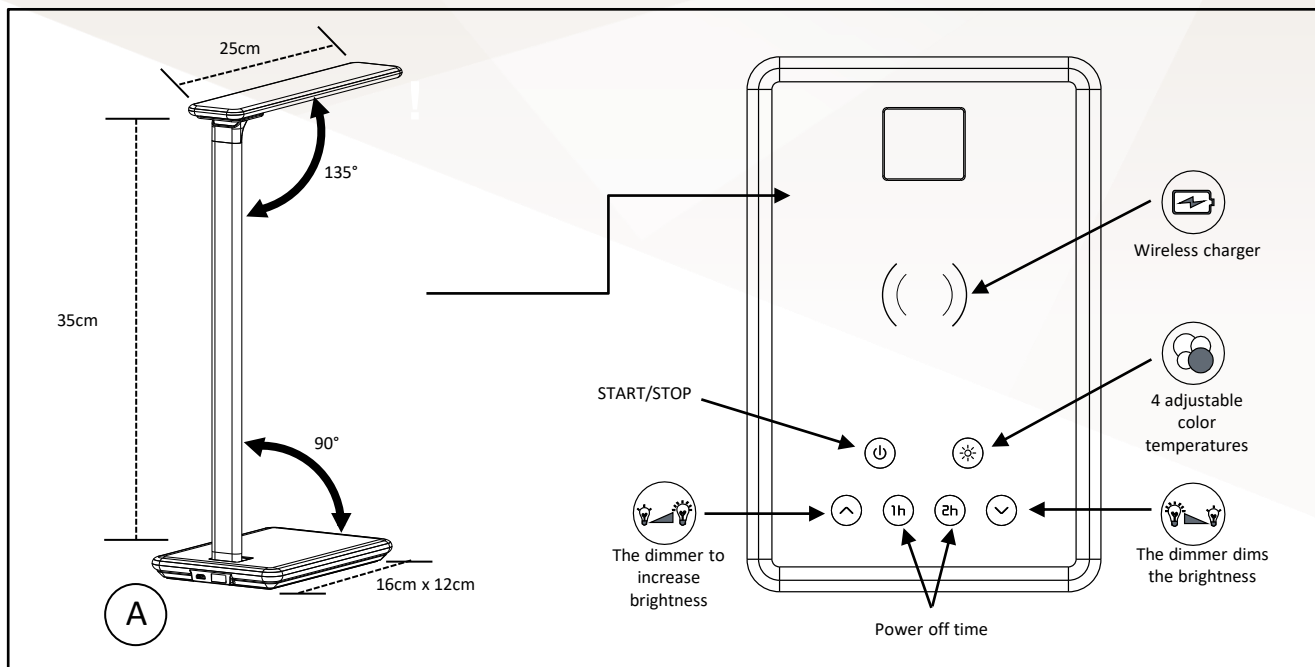


OUR CERTIFICATIONS

Unilux is committed to an eco-responsible approach and ensures that its products respect this commitment. Indeed, we are very concerned about current environmental issues and we aspire to respond as best as possible to the concerns of our consumers on this subject. Sustainable development is at the heart of our strategy and we act for the environment. You will find below the different certifications that Unilux has and that prove its environmental commitment.



USER GUIDE



30 products available on pCon Planner

You will be able to obtain data on many UNILUX or OFML standard products and integrate them quickly and easily into 3D space layouts via pCon.



Download on our E-shop

Always available: photos in HD, data sheets, instruction manual, repairability instructions for all our products.



Do you have any questions?

Our after-sales service is always at your disposal

Tèl: +33 1 81 86 06 03

E-mail: contact.unilux@hamelinbrands.com

17 avenue du Parc TECHNOPOLIS

91380 Chilly Mazarin – France

Tèl: +33 1 81 86 06 00

www.my-unilyx.com

E-mail: contact.unilux@hamelinbrands.com

UNILUX