



UNILUX

JAZZ



The JAZZ LED lamp has 5 levels of light intensity that allows the adjustment of the lighting color (3 levels suitable for different activities: work, reading, rest). JAZZ thus allows its user to benefit from tailor-made lighting. The Jazz lamp is distinguished by a design with fine and clean lines.



- **Wireless induction charging socket (5 W):** Charge your smartphone or other compatible* device by simply placing it on the lamp base.
- **USB charging port:** integrated USB 2.0 Type A connection 5 V, max. 1A, charge your smartphone or tablet (cable not supplied).
- **Brightness:** multiple settings, with its 3 colors temperature modes to choose from and 5 levels of brightness adjustable by touch button, this lamp is fully optimized for rest, reading, work. Choose the best quality of light for your activities.
- **Modern and sober design:** fine and clean lines. Its head does not exceed 1 cm in thickness which gives it an elegant character.
- **Smart:** The memory feature allows you to adjust the brightness once, it will automatically return to your setting when you turn it back on.
- **Automatic:** depending on the ambient light of your workspace, the lamp adapts its light for a better visual comfort, thanks to its brightness sensor.

Warranty: 2 years

Max height: 45 cm/ minimum height: 25 cm

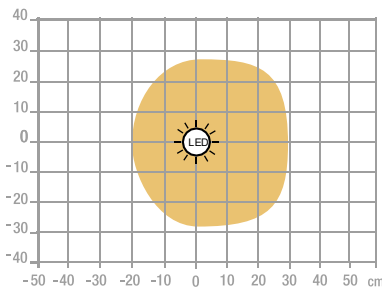
Materials: ABS plastic base and head/ aluminum arm



Professional replaceable light source (LED only)

Characteristics

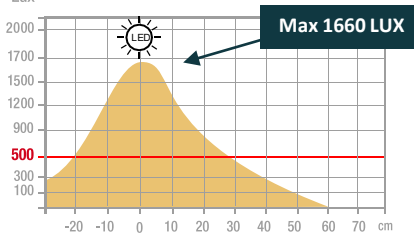
Measurement in Lux on the worktop view at 35 cm:



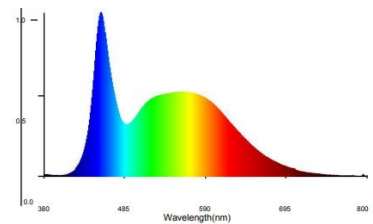
> 500 Lux

< 500 Lux

Measurement in Lux on the worktop in profile view at 35 cm:



Measurement in nanometers of the light spectrum



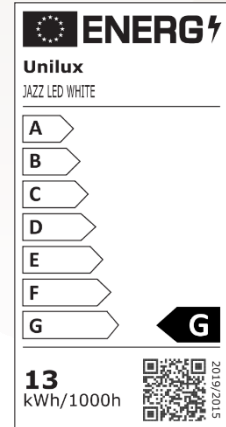
- 0 No-risk
- 1 Low-risk
- 2 Moderate-risk
- 3 High-risk

SAP no.	400093836
EAN code	3595560016327
Color	White and grey metal
Luminous flow	977
Lux at 35cm	1660 cm
Lm/W	75
Color T* (K)	2800 / 3800 / 4900
CRI	84
Source lifetime (h)	82
Energy consumption (kWh/1000 h)	13
USB Port	Yes
Inductive charger	Yes
Net weight (kg)	1,08

OUR CSR COMMITMENTS

1. All our lighting are **100% repairable** thus limiting planned obsolescence.
2. Reduce our carbon footprint through our **ECO-DESIGN THINKING** approach.
3. Contribute to the preservation of the planet's natural resources by promoting the use of **recycled materials**.
4. Optimize our packaging to control our **transport costs**.
5. Highlight the **talent of our employees** by ensuring social equality.

Energy class



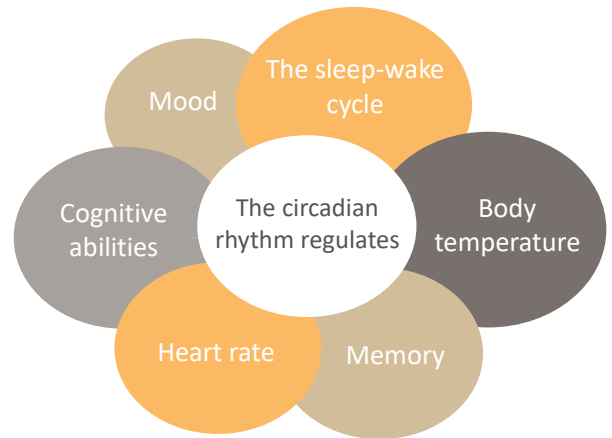
OUR EXPERTISE

1-Why use accent lighting?

We are regularly subjected to constant artificial lighting in the office that does not take into account our biological rhythm. Poor lighting quality can cause headaches, sleep disorders, loss of concentration. According to a recent study, only 34% of offices reach the lighting level of 500 lux recommended by Occupational Medicine.

2-Biodynamic light: source of well-being!

An adapted biodynamic light that accompanies you on a daily basis is essential to be effective in your work, your projects in order to prevent any harmful consequences produced by poor lighting. Your productivity will be greatly improved, you will be more dynamic and in a better mood. This is the reason why each individual must carefully follow his "circadian rhythm". The circadian rhythm is a biological rhythm that governs a set of physiological processes in humans. It is regulated by light for 24 hours.

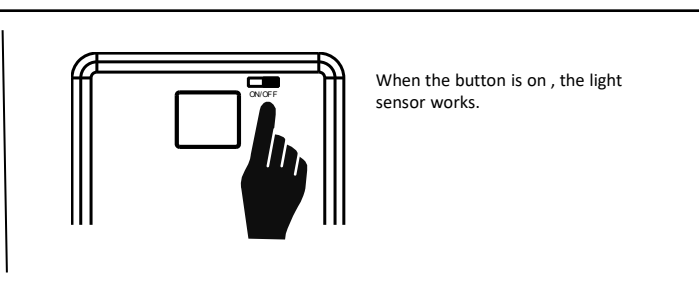
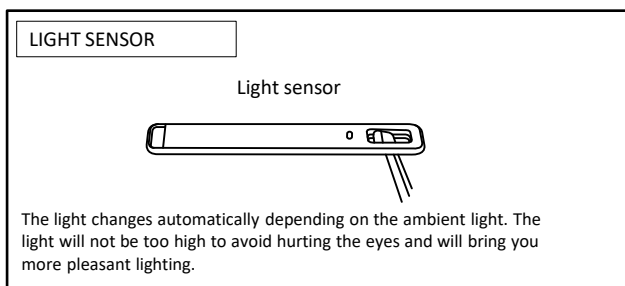
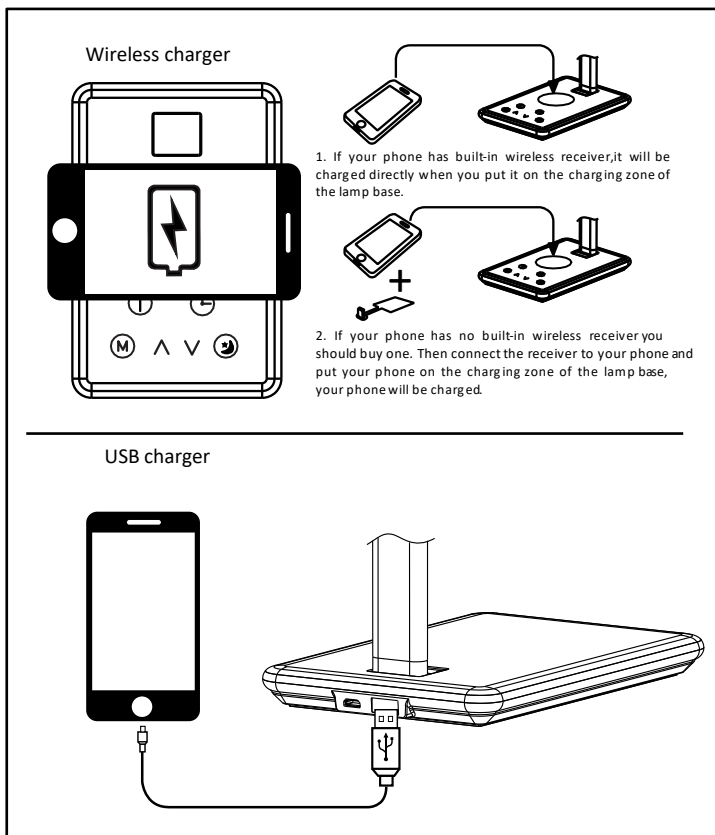
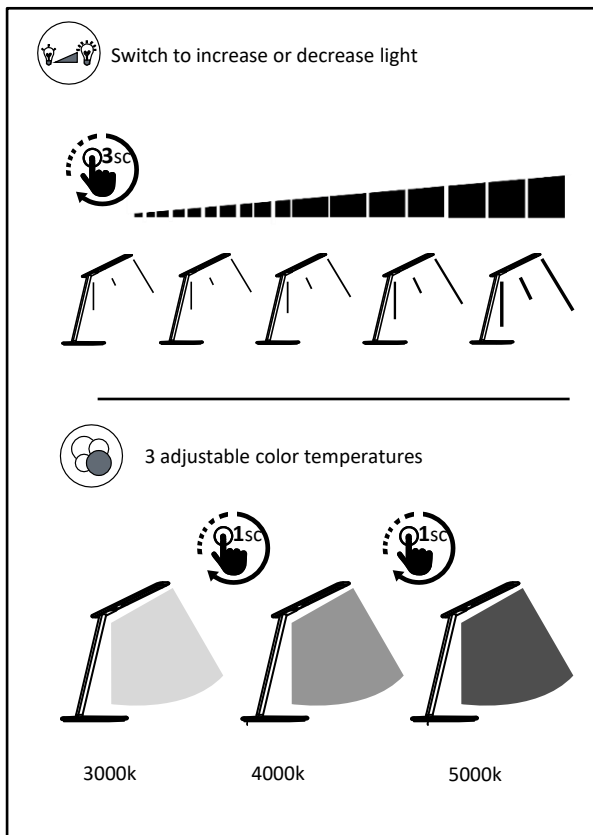
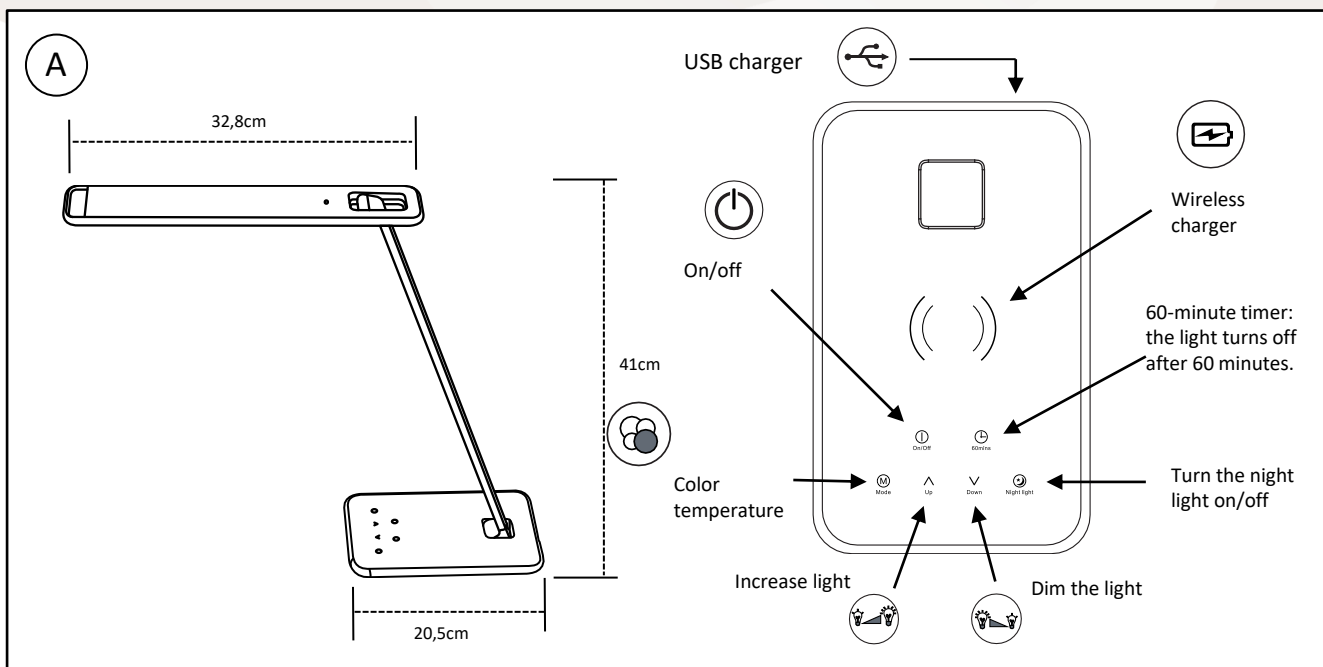


OUR CERTIFICATIONS

Unilux is committed to an eco-responsible approach and ensures that its products respect this commitment. Indeed, we are very concerned about current environmental issues and we aspire to respond as best as possible to the concerns of our consumers on this subject. Sustainable development is at the heart of our strategy and we act for the environment. You will find below the different certifications that Unilux has and that prove its environmental commitment.



USER GUIDE



30 products available on pCon Planner

You will be able to obtain data on many UNILUX or OFML standard products and integrate them quickly and easily into 3D space layouts via pCon.



Download on our E-shop

Always available: photos in HD, data sheets, instruction manual, repairability instructions for all our products.



Do you have any questions?

Our after-sales service is always at your disposal

Tèl: +33 1 81 86 06 03

E-mail: contact.unilux@hamelinbrands.com

17 avenue du Parc TECHNOPOLES

91380 Chilly Mazarin – France

Tèl: +33 1 81 86 06 00

www.my-unilyx.com

E-mail: contact.unilux@hamelinbrands.com

UNILUX